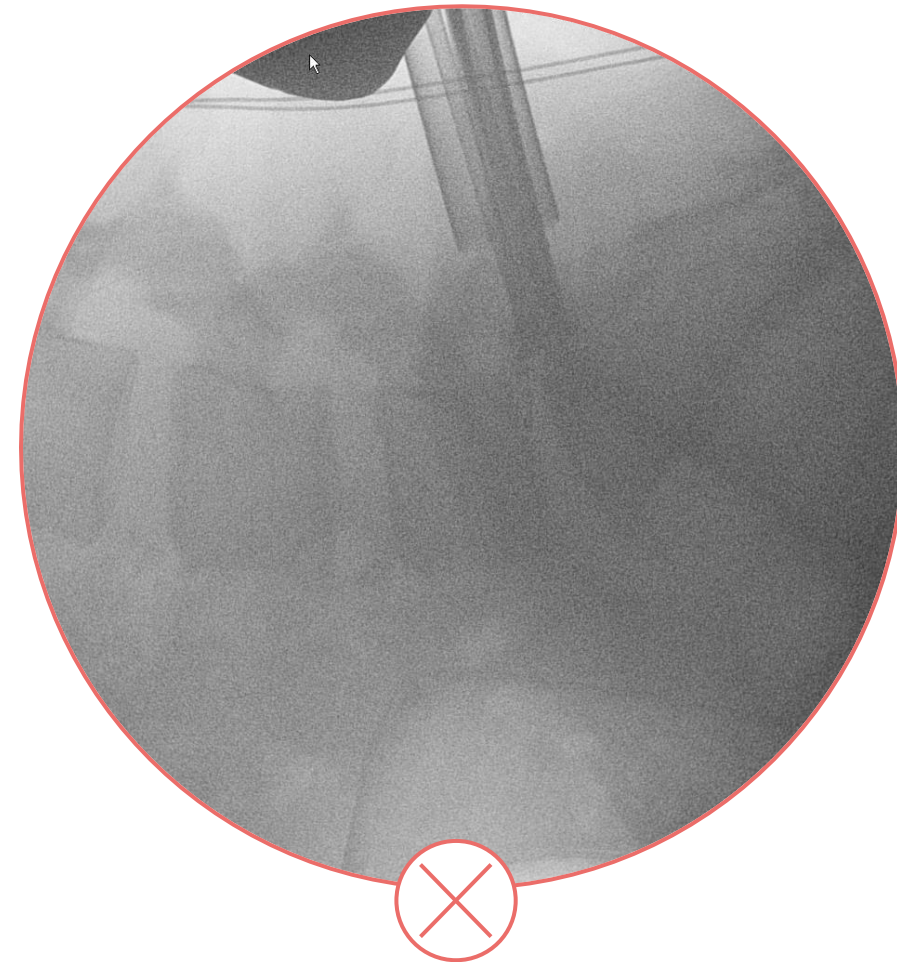


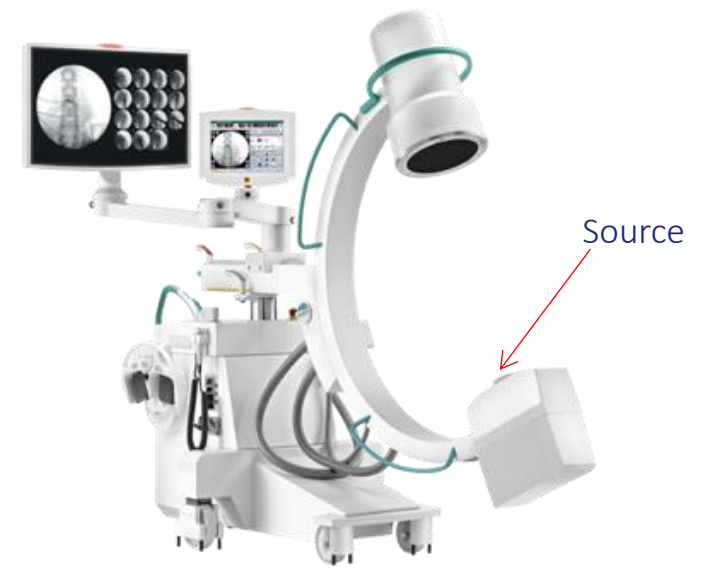
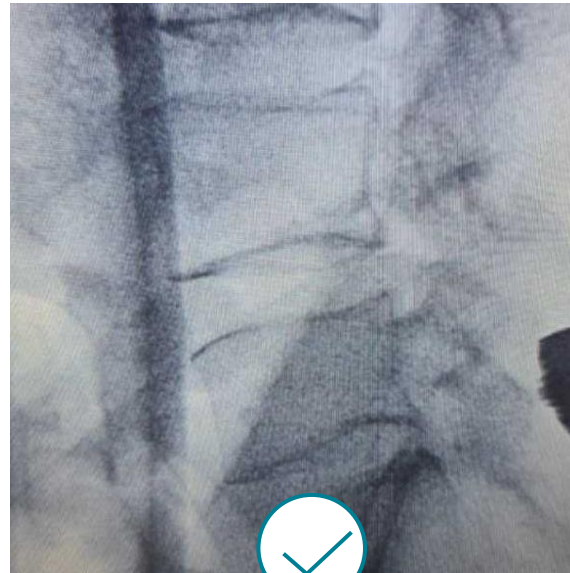
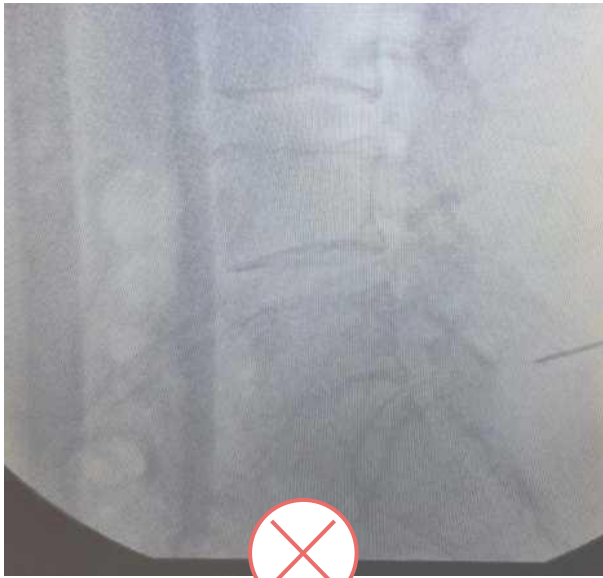
- **Issue:** Fluoro is not allowing you to confirm that the anatomy is 'true' (crisp), and therefore you can't be sure the tools are in correct alignment
- **Cause:** Fluoro is not strong enough (or not set to the right strength) to get through the patient, or the fluoro is misaligned to the anatomy
- **Prevention:** Speak with the fluoro tech early in the procedure, ideally when they take the first shot to confirm the correct level



Fluoro is Low Quality and/or Out of Line with Anatomy

Solution:

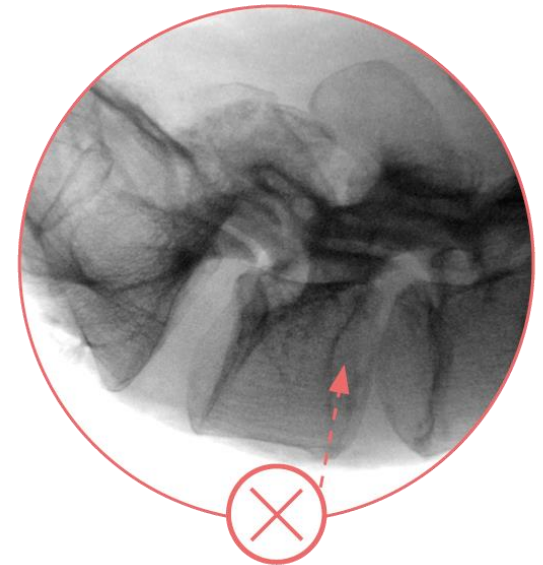
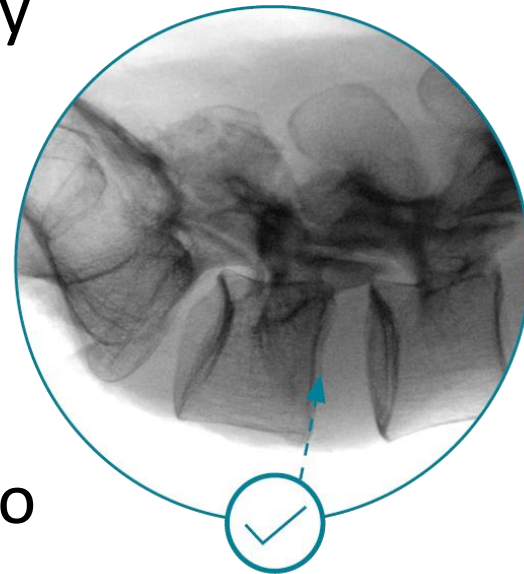
- *Poor image quality*: Ensure low-dose is not on, collimate/zoom to remove any 'white' areas (that the machine is trying to balance), position source closer to patient



Fluoro is Low Quality and/or Out of Line with Anatomy

Solution:

- *Poor image quality*: Ensure low-dose is not on, collimate/zoom to remove any 'white' areas (that the machine is trying to balance), position source closer to patient
- *Not aligned*: Work with the fluoro tech, surgeon and anesthesiologist (who can tweak the bed position) to improve



Fluoro is Low Quality and/or Out of Line with Anatomy

Solution:

- *Poor image quality*: Ensure low-dose is not on, collimate/zoom to remove any 'white' areas (that the machine is trying to balance), position source closer to patient
- *Not aligned*: Work with the fluoro tech, surgeon and anesthesiologist (who can tweak the bed position) to improve
- *L5/S1 considerations*:
 - Reduced visibility around iliac crest
 - Determine deployment depth from L5 (if deploying into S1) – see next slide
- Do not proceed if you cannot determine if the anchor is likely to end up in an acceptable position

Fluoro is Low Quality: Determining Depth Based on Opposing Endplate

Note the position of the posterior of the anchor

- Green: Anchor head
- Yellow: Pusher head
- Blue: Back of vertebral body (L5)
- White: Cupping of opposing endplate (L4)

