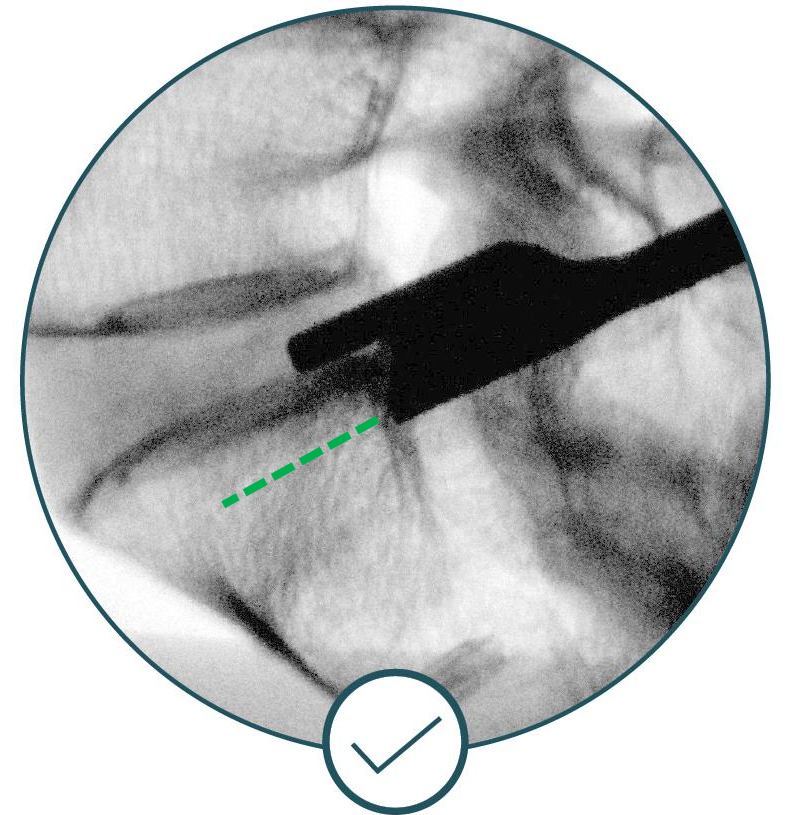
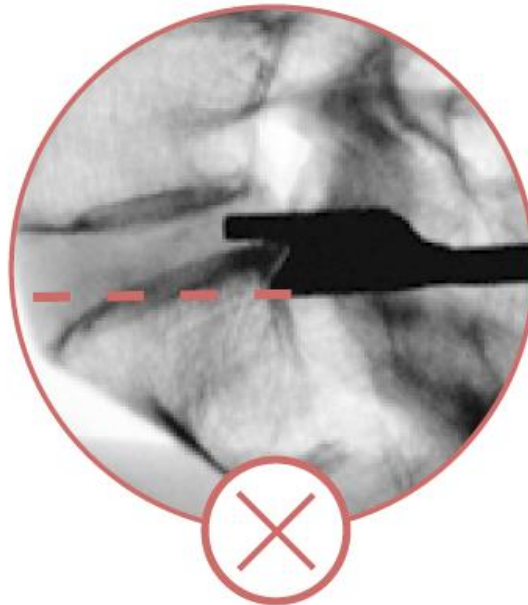
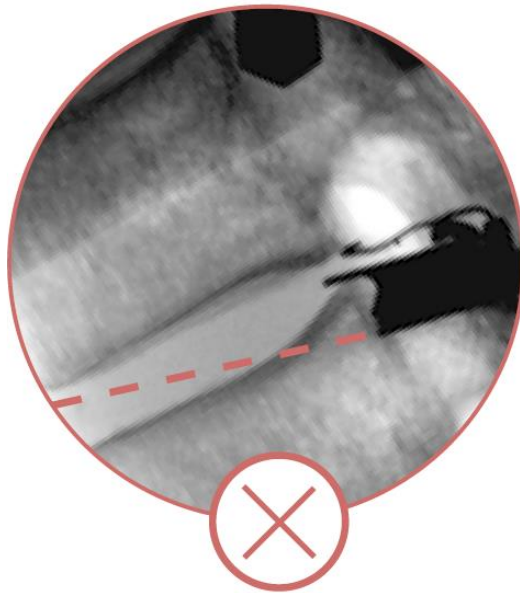


Angled Toward the Endplate

8

Issue: Tool trajectory predicts the anchor will violate the endplate



Angled Toward the Endplate

Cause: Distal end of tool is not against the posterior cortex of the target vertebral body

- Not enough lamina removed
- Tube position and/or skin incision location
- Fluoro hard to interpret
- Steep endplate cupping

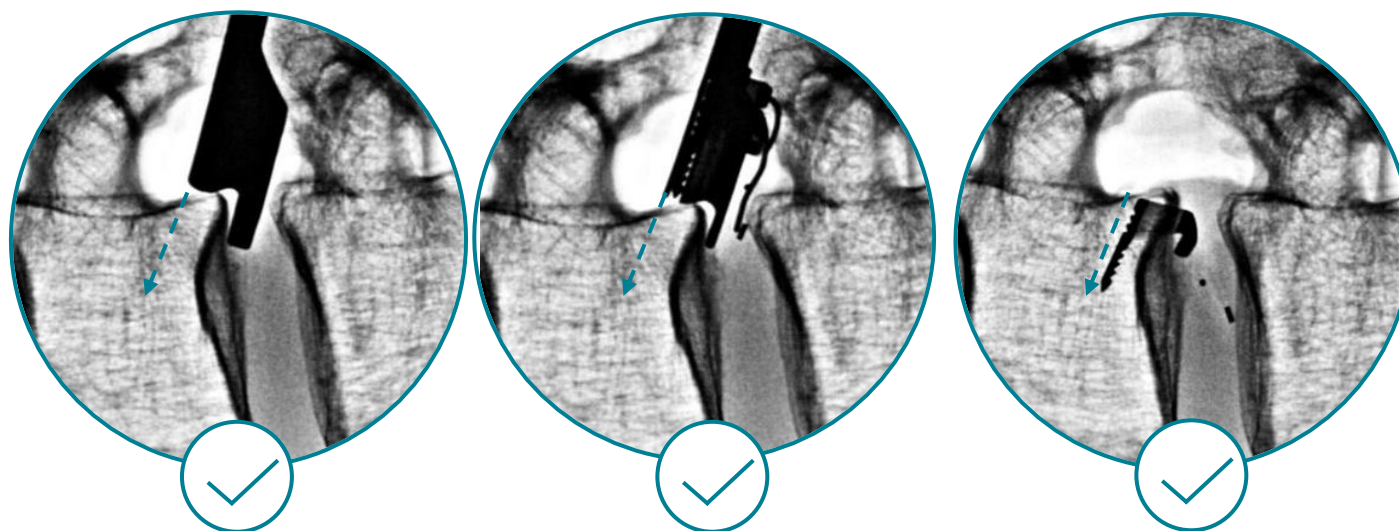
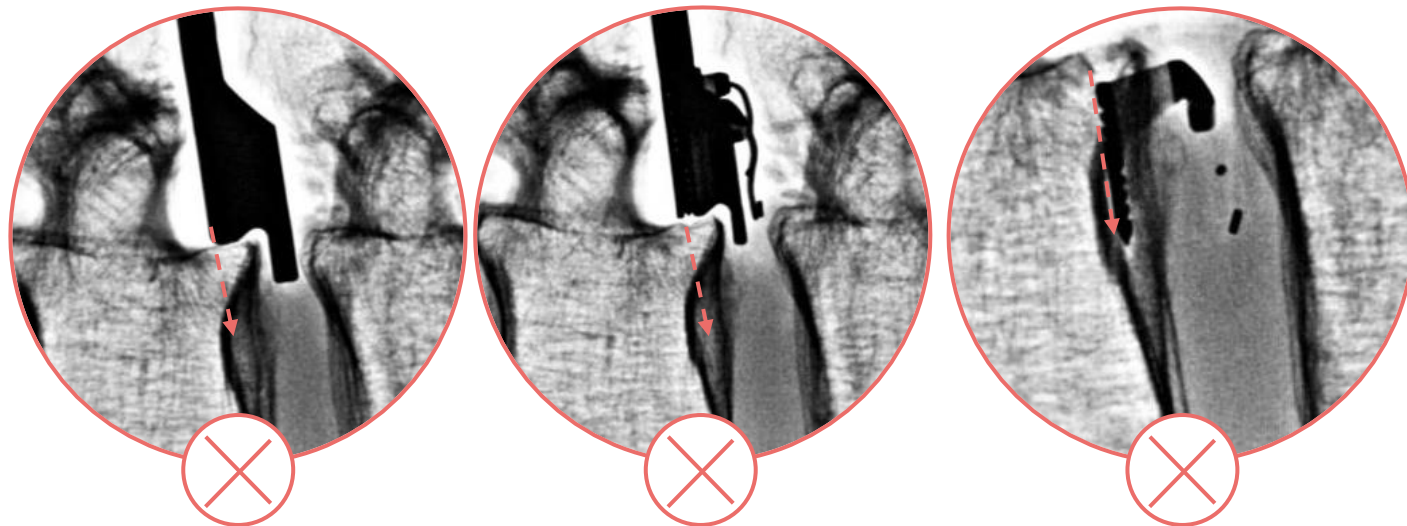
Angled Toward the Endplate

Prevention:

Do not implant without correcting!

Solution:

Follow the cupping, even if means a steep implantation



Angled Toward the Endplate

Prevention: Do not implant without correcting!

- Solution:**
- Follow the cupping, even if means a steep implantation
 - Ensure fluoro image is in-plane and clear
 - Remove more lamina to get good trajectory
 - Wand the tube (loosen and re-angle)
 - Extend the skin incision if absolutely necessary and bony access is clear
 - Trial the opposing vertebra as possible alternative