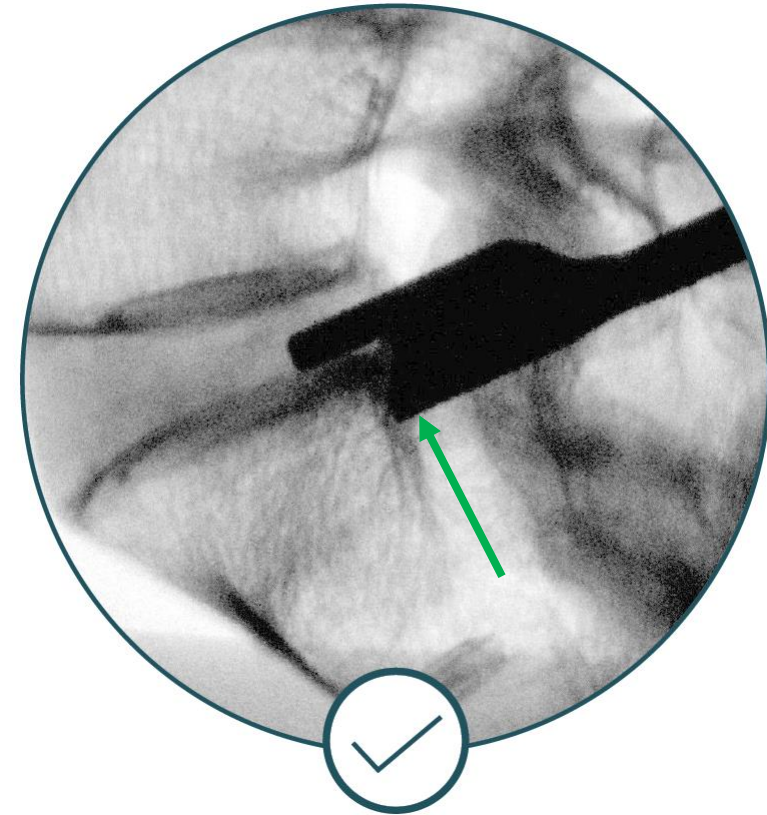
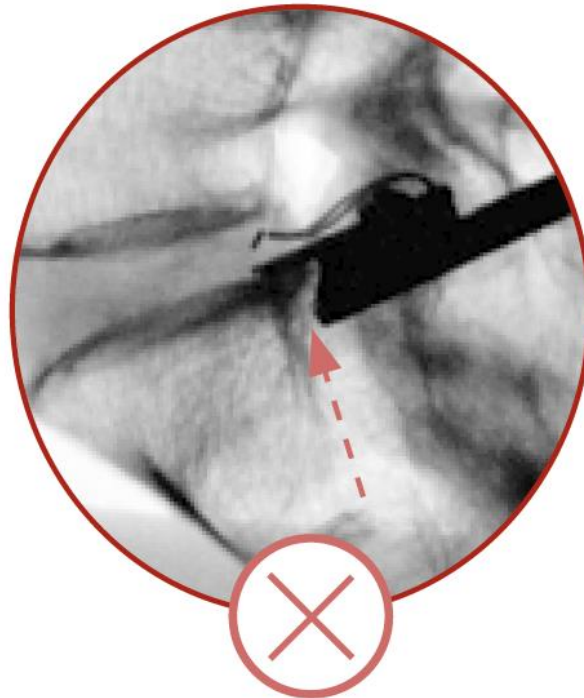
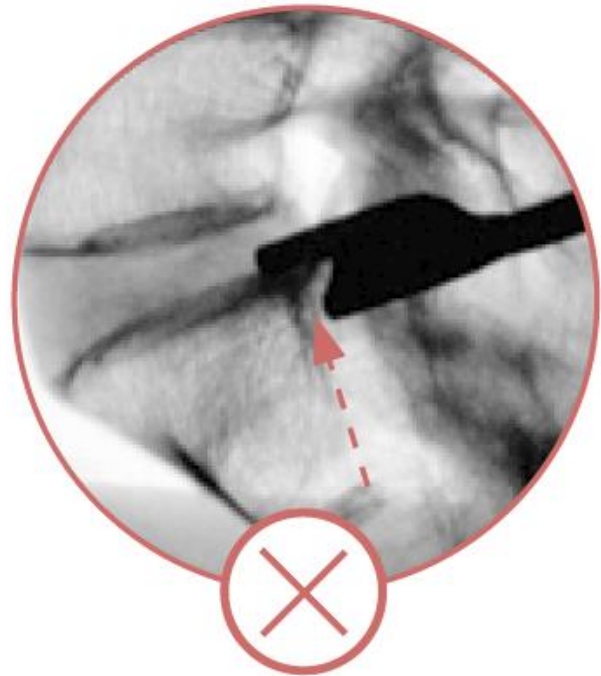


Can't get positioned against the posterior wall

7

Issue: Distal end of tool is not against the posterior cortex of the target vertebral body

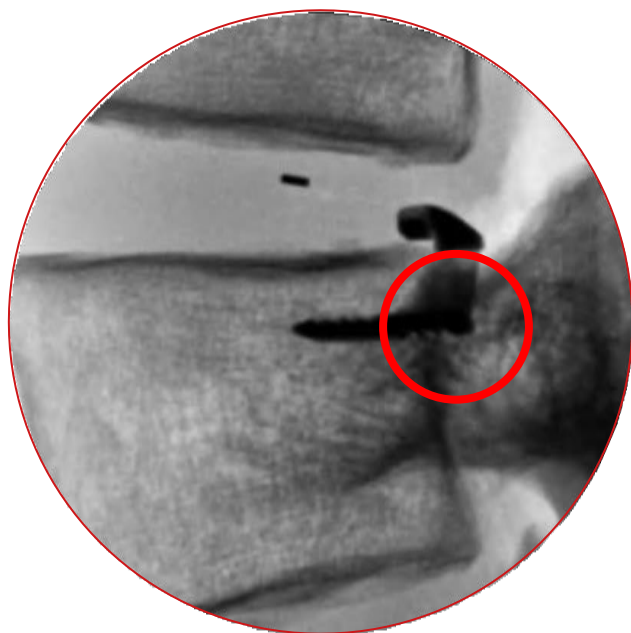


Note: Gap between tool and vertebral body

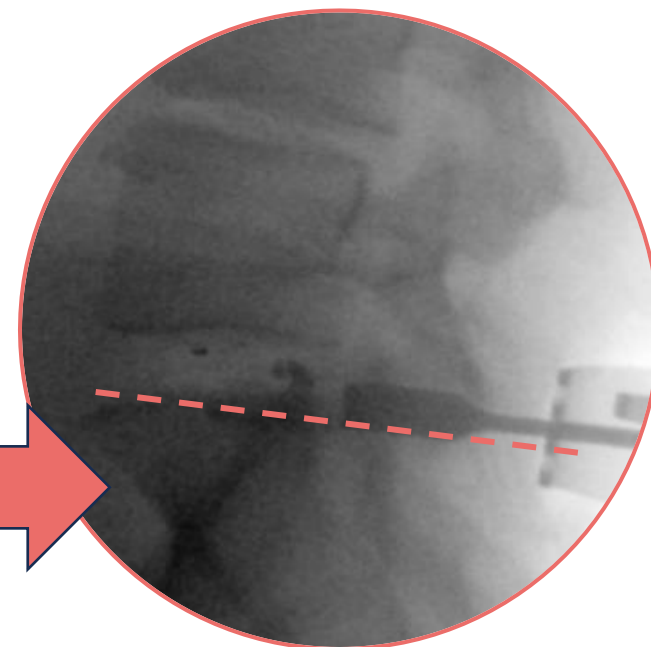
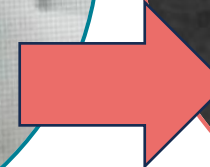
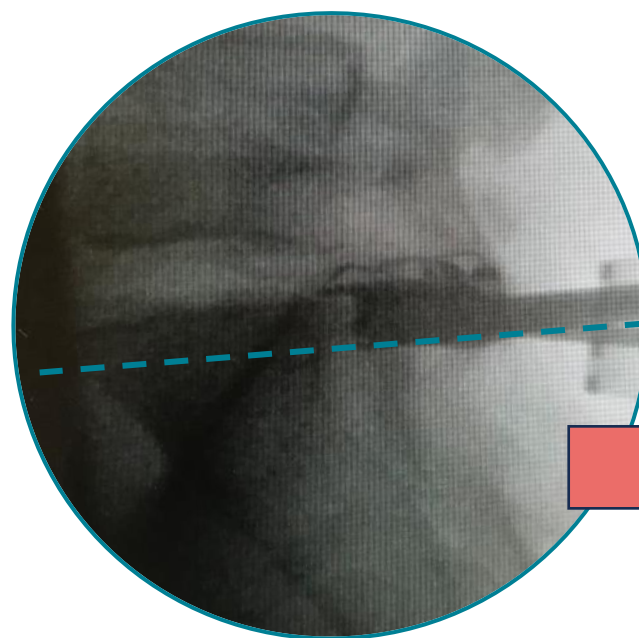
Can't get positioned against the posterior wall

Issue: Distal end of tool is not against the posterior cortex of the target vertebral body

- May result in anchor left protruding into epidural space (below left)
- May result in loss of orientation during malleting (below right)



Implant Protruding



Loss of Orientation

Can't get positioned against the posterior wall

Cause:

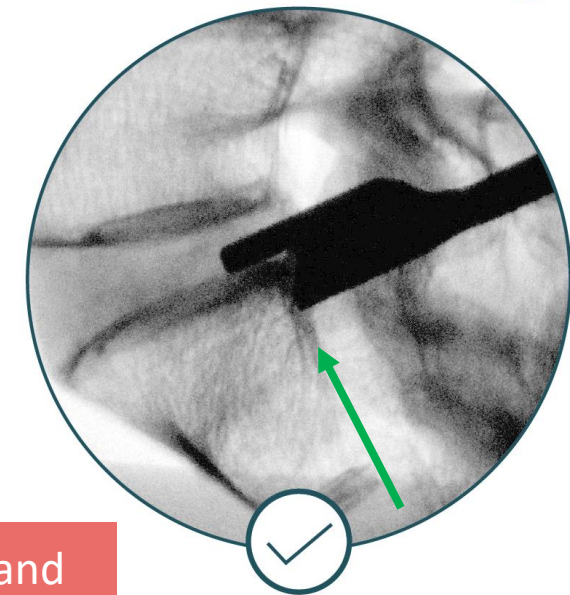
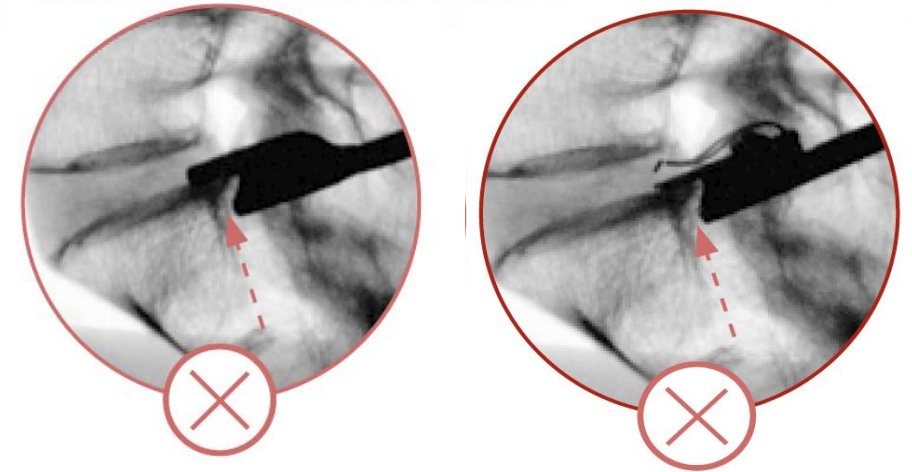
- Lamina or facet restricting access
- Tool not being held down firmly
- Fluoro hard to interpret
- Osteophyte or soft tissue on back of vertebral body interfering

Alignment Trial and/or Delivery Tool Position: Can't get positioned against the posterior wall

BARRICAID®

Solution:

- Remove additional lamina, medial facet, and/or undercut the spinous process, place the tool again
- Ensure tool is pushed down against bone – tap on tool handle if necessary
- Ensure fluoro image is in-plane and clear
- Remove osteophytes and/or bi-polar soft tissue that may be interfering with tool
- If identifying posterior of vertebral body is difficult, place another tool (retractor or suction) against bone for reference
- Trial opposing vertebra as possible alternative
- If needed, over-drive strike-cap to compensate ~1-2mm



Note: Gap between tool and vertebral body