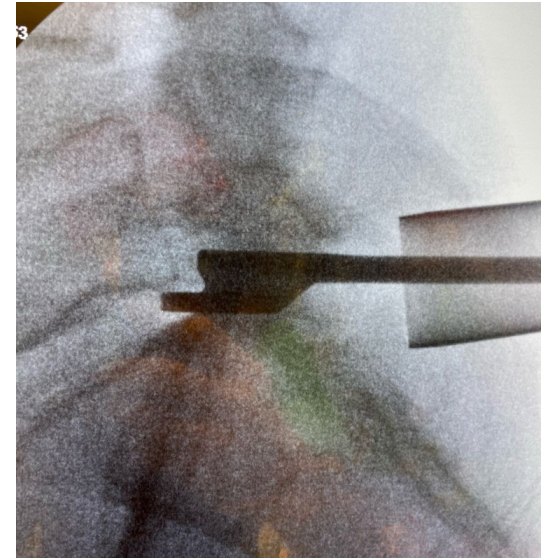
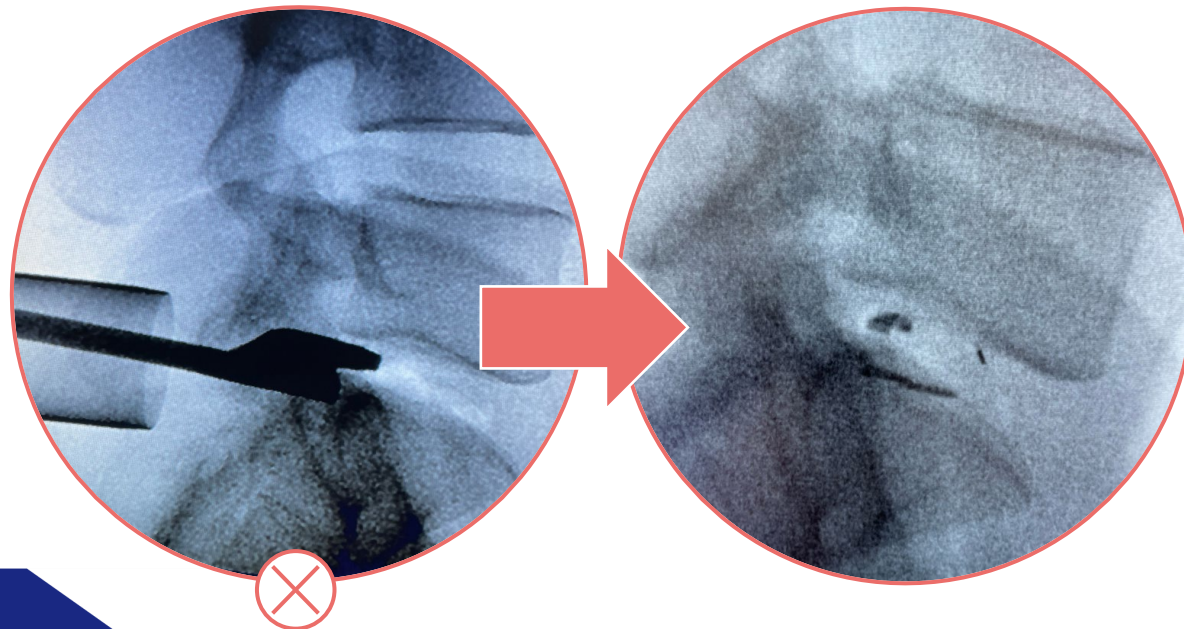


Skin Incision Too Low (Caudal)

1

Issue: Starting too caudal creates:

- A steeply angled approach to the cranial vertebra (right)
- No approach to the caudal vertebra (below)



Skin Incision Too Low (Caudal)

Cause: Skin incision was too low (caudal)

- Particularly challenging if the surgeon is using a tube, since correction is more difficult

Prevention:

- Identify and mention incision early – i.e., pay attention to the spinal needle used (with fluoro) to check the correct level prior to making the first incision

Skin Incision Too Low (Caudal)

Solution:

- Check defect location (fluoro with tool in place):
 - Defect abutting cranial vertebra will yield an OK angle
- If needed, extend incision cranially (to correct angle)
- Do not allow implantation to proceed if the surgeon cannot align Delivery Tool at a parallel angle to the endplate.